



COUNCIL POLICY

Street Tree Planting Policy

Approved by: Council on 25 June 2001 [City Strategy Committee]

Subsequent Amendments:

Formatting updated 6 August 2007

Document Owner:

Position: Manager, Asset Management

Phone: 8203 7467

ACC2003/1319

1 INTRODUCTION

The City of Adelaide recognises the significant contribution that street trees make to providing a high quality public realm where people are encouraged to partake in a wide range of activities, meet others and to linger in comfortable surroundings.

This policy is intended to cover the provision of street trees in the City including the Squares.

2 POLICY OBJECTIVES

- 2.1** To “green” the City by the extensive provision of street trees that are pleasing in appearance and provide extensive shade for the comfort of citizens.
- 2.2** To add value to the public and private realms by reinforcing the character of the City as a desirable place to live or visit.

3 POLICY STATEMENTS

- 3.1** The City of Adelaide values the contribution of trees to achieving a high quality urban environment and will seek to plant all streets with trees whenever there is an opportunity to do so within the urban design outcomes for the area. Such plantings will complement any heritage building facades.
- 3.2** Trees will be selected for individual streets that support the urban design role of each street in the City’s activities.
- 3.3** A diverse range of tree species will be used to reinforce street identity, attract a variety of native bird life to the City, create visual interest and enhance the amenity of the public realm.
- 3.4** Trees will be planted to form green corridors linking the Park Lands, Squares and major public and civic places.
- 3.5** Historic trees and avenues will be preserved and replaced in recognition of their cultural significance to the City. Adjacent future plantings will be placed to preserve the integrity of these trees and avenues.
- 3.6** All street trees will be managed to maintain them in a healthy state and minimise any adverse impacts of the trees on the public realm.
- 3.7** While exotic deciduous trees will be the most common group of trees used every attempt will be made to use native trees to reflect and support the growing diverse nature of the City’s community.

- 3.8** While trees will always be selected that have minimal impact on services such as electricity and water the City of Adelaide strongly encourages service utilities to minimise the impact of their operations on the street trees of the City.

4 MAJOR LEGISLATIVE AND CORPORATE REQUIREMENTS

In adopting this policy it is recognised that there are specific legislative requirements to be met as well as other Corporate goals.

Relevant major legislative requirements are the:

- Local Government Act
- Development Act – for significant trees
- Water Resources Act
- Electricity Act

This Policy is to be implemented in conjunction with other relevant Corporate Policies and Strategies including the:

- 2004-2007 Strategic Management Plan
- Adelaide (City) Development Plan
- Park Lands Management Strategy
- Environmental Management Strategy



OPERATING GUIDELINES

*POLICY TO WHICH THE OPERATING GUIDELINES RELATE:
STREET TREE PLANTING POLICY*

***TITLE: STREET TREE OPERATING
GUIDELINES***

Approved by: City Strategy Committee. 25 June 2001

Subsequent Amendments:

Date, authorisation and reference to aspects amended

Document Owner

Position: *Manager, Asset Management*

Phone: *8203 7467*

CONTENTS LIST

1. INTRODUCTION
 - 1.1 Scope
 - 1.2 Legislative and Corporate requirement

2. POLICY IMPLEMENTATION STRATEGY
 - 2.1 Key Elements
 - 2.2 Training
 - 2.3 Corporate Communications

3. POLICY GUIDELINES
 - 3.1 Proposals
 - 3.2 Role
 - 3.3 Design Parameters
 - 3.4 Selection
 - 3.5 Public Consultation
 - 3.6 Street Tree Register
 - 3.7 Planting
 - 3.8 Maintenance
 - 3.9 Major Street Upgrades
 - 3.10 New Development Work
 - 3.11 Management Plan

4. ROLES AND RESPONSIBILITIES
 - 4.1 Policy
 - 4.2 Selection of Trees
 - 4.3 Installation of Trees
 - 4.4 Maintenance of trees
 - 4.5 Development Approvals
 - 4.6 Service Standards

5. PROCESS AND REVIEW

6 MONITORING AND PERFORMANCE

6.1 General

6.2 Maintenance

6.3 New Plantings

6.4 Asset Management

Appendix 1 – Street Tree Management Process

Appendix 2 – Implementation Program

Appendix 3 – Training

Appendix 4 – Communication Plan

1 INTRODUCTION

Trees are the most significant form of vegetation used in the urban landscape. They benefit residents, commuters and visitors visually, emotionally and physically by defining and softening streetscapes through the unification of disparate architectural forms, give scale to buildings and provide shade and protection to pedestrians. These effects can clearly be demonstrated by the trees in Stanley Street, Frome Road, Hutt Street, Buxton Street and North Terrace adjacent to the Hyatt Hotel.

Adelaide's community is protective of these trees hence any matters relating to their care and health have a high profile and can generate considerable passion, as the trees are irreplaceable in the short term.

Approximately 8000 street trees exist within the City of Adelaide excluding those located adjacent to Park Land roads. Council is committed to the protection of these trees through close monitoring and management and must provide a sound basis for any decision its makes with regards to these assets.

To sustain long term street tree plantings Council must have a street tree management plan in place encompassing constant review and analysis, planning protection, management, and safety and care to improve the quantity and quality of its trees.

This document provides the strategy to be used for implementing the Street Tree Policy.

1.1 Scope

The Policy and Implementation Guidelines are intended to cover the management of street trees in the City. Trees in the Park Lands will be addressed in a future report

1.2 Legislative and Corporate Requirements

1.2.1 LEGISLATIVE

The following Acts have precedence over any Council Policies and must be considered when interpreting and implementing this policy.

Local Government Act

- Section 196 - Community Land Management Plans
- Section 197 - Community Land Management Plans
- Section 198 - Community Land Management Plans
- Section 199 - Community Land Management Plans
- Section 232 - Trees
- Section 233 - Damage
- Section 244 - Liability for injury, damage or loss on community land
- Section 245- Liability for injury, damage or loss by a certain tree
- Section 299 - Vegetation clearances

Development Act 1993

- Under Section 26 re Control of Significant Trees

**Commonwealth Environment Protection and Biodiversity Conservation Act
1999**

Electricity Act 1996

Heritage Act 1993

Water Resources Act 1997

Environment Protection Act 1993

**Animal and Plant Control (Agricultural Protection and Other Purposes) Act
1986**

SA Water Act

1.3.2 CORPORATE

Council is responsible for maintaining access to underground pipes, cables and utility service covers to enable maintenance and repairs by Public Service Companies and licensed carriers.

Corporate Strategies, policies and guidelines that shape the City's Urban design framework and have been used to provide a basis for this policy are:-

Corporate Plan 1999-2004

Adelaide Public Realm Document – 1997

Developed to establish design guidelines for the public realm in the City of Adelaide. It proposes an integrated approach to the design and management of the city's streets and other public places.

Environmental Management Plan

Integrated Movement Strategy

Access Action Plan 1998 - 2002

Communication and Consultation Policy

Development Act 1993 Adelaide (city) Consolidated – 8 March 2001

These documents recognise the City of Adelaide's commitment to good urban design. Of these the Adelaide Public Realm Document is the primary reference. It provides direction to ensure that the City's public spaces are functional and respond to location, climate, local conditions and user needs by defining a hierarchy of streets. Guidance is further provided in the selection of tree species giving consideration to the scale and type of street.

POLICY IMPLEMENTATION STRATEGY

2.1 Key Elements

2.1.1 The approach for implementing the Policy is based on:

- **ROLE** – identifying the role of each street in the City's activities and assigning a street category so that all streets having similar roles share common themes in terms of the street trees used.
- **DESIGN** – determining the particular design parameters impacting on tree selection that are relevant for each street.

- **SELECTION** – having established the role of the street and the particular design parameters for an individual street the most appropriate tree species will be selected.
- **CONSULTATION** – the proposed species selected for a street must be confirmed through public consultation that could be undertaken as part of the consultation process for a general street up-grade.
- **REGISTRATION** –when the selected species has been confirmed it will be entered on a Street Tree Register that will be available for public information. No changes will be made to the species in the Register without further public consultation.
- **PLANTING** – all plantings will follow the species set down in the Register which have been selected because they are in accord with the individual urban design requirements for the street.
- **MAINTENANCE** – once established the street trees will be maintained to ensure their health and longevity. Where a tree dies it will be replaced by the particular species listed in the Register for the street.

2.1.2 The process for implementing these operationally is indicated in Appendix 1 and the program for implementation is shown in Appendix 2.

2.2 Training

All relevant officers will be made aware of the policy through a Training Plan (Appendix 3) and those concerned with its implementation will receive focused instruction regarding the Implementation Guidelines, and the maintenance specifications as they apply to street trees.

2.3 Corporate Communications

A media and communications strategy has been developed (Appendix 4) so that people are made aware of Council's of the Street Tree Register and how they might access it.

3 POLICY GUIDELINES

3.1 Proposals

- 3.1.1** Streetscape upgrades will take all opportunities to increase the number of street trees in the city and development plans will maximise opportunities and provide direction for future planting programs.
- 3.1.2** A number of Adelaide's street trees are reaching the end of their life useful life, for example the perimeter of Whitmore Square, Molesworth Street and South Terrace. Council will monitor the health of these trees and replace them as required. A strategic program of tree replacement will be developed.
- 3.1.3** Requests for street trees are received from residents and ratepayers, and these will be considered in relation to any street tree planting proposals.

3.1.4 Reinforce existing street tree planting by infilling where possible and replacing poor specimens

3.2 Role

The role of streets in the City are categorised within the Adelaide Public Realm Document and in this document as:

Ceremonial	King William Street and North Terrace.
Terraces	<ul style="list-style-type: none"> ▪ South Adelaide – West Terrace, South Terrace, East Terrace and North Terrace ▪ North Adelaide – Mills Terrace, Barton Terrace, Strangways Terrace, Kingston Terrace, Mann Terrace, Pennington Terrace, Lefevre Terrace and MacKinnon Parade
Major Streets	<ul style="list-style-type: none"> ▪ Major east-west streets – Rundle/Hindley Street, Grenfell/Currie Street, Pirie/Waymouth Street, Flinders/Franklin Street, Wakefield/Grote Street, Angas/Gouger Street, Carrington Street/Wright Street, Halifax/Sturt Street, Gilles/Gilbert Street ▪ Major north-south streets – Morphett Street, Pulteney Street, Hutt Street ▪ Jeffcott Street
Minor Streets	North-south and east-west streets running between major streets
Major Retail streets	Rundle Street (including Rundle Mall), Hindley Street, Gouger Street, Hutt Street, Melbourne Street, and O'Connell Street
Squares	Victoria Square, Light Square, Whitmore Square, Hindmarsh Square, Hurtle Square, Wellington Square

Of particular importance is the role of some of these streets as interconnecting corridors between the Park Lands and Squares as identified in the Park Land Management Strategy:

- Jeffcott Street
- Molesworth/Tynte Street
- O'Connell Street
- Jerningham Street
- Currie/Grenfell street
- Grote/Wakefield Street
- Sturt/Halifax Street
- Morphett Street
- King William Street/Road
- Pultney Street
- Hutt Street

3.3 Design Parameters

3.3.1 The location of and selection of street trees must meet Council's Urban Design policy guidelines.

3.3.2 Street Context

When considering design principles thought must be given to the aesthetic and cultural character of the area which in turn can provide economic benefits in respect of both property values and business turnover.

- Scale – width of street and height of buildings on either side
- Adjoining Land Use – related to use of adjacent buildings, access requirements and quantity of pedestrian and vehicular traffic
- To provide continuity and consistency along the whole street priority will be given to establishing a single character along the length of a street rather than breaking streets into a number of precincts with different characteristics.
- The location of heritage building facades and how these may best be complemented by appropriate tree plantings.

3.3.3 Placement

- Placement of street trees should be determined in relation to underground and overhead services, adjacent land uses, including historic heritage buildings (including such features as structure and decorative lighting) and other significant features, views, buildings and driveways entrances, street and pedestrian lighting, existing street character and other street furniture elements.
- Placement must ensure safe vehicular and pedestrian sight-lines
- Street trees should only be located in footpaths at least 1800mm in width and at least 600mm in from the kerb.
- Street tree planting in road carriageways should be avoided if possible giving due consideration to all safety factors. If trees are planted in a central median a minimum width of 2500mm is required or if in protuberances the trees should be located at least 1000mm in from the kerb.

3.4 Selection

3.4.1 Tree species will be selected for planting depending on their suitability for the site, their growth performance, and their potential to contribute to the overall streetscape.

- 3.4.2** A South Australian character will be reinforced in the choice of species, responding to the cultural significance of native and introduced species.
- 3.4.3** The clear difference between the built-up City grids and Park Lands will be reinforced by the predominant use of deciduous exotic trees in the streets, and indigenous native species in the Park Lands.
- 3.4.4** Specie selection will be used to reinforce the street identity and promote ecological diversity.
- 3.4.5** To maintain and expand a diverse range of suitable species for use as street trees in the City it will be necessary to liaise with professional associations and the nursery industry to maintain an awareness of new trees being trialed for street tree planting (eg TREENET and advanced tree growers).
- 3.4.6** The criteria for selection of street trees includes the ability to:-
- Tolerate harsh growing conditions including drought, heat, contaminated and compacted soils, poor aeration and drainage etc.
 - Attain a clear trunk to at least 2.5m over pedestrian footways and 4.5m over vehicular lanes.
 - Have a branching habit that extend upwards from the trunk
 - Have a rooting system that is unlikely to lift kerbs and paving
 - Is consistent in form and growth
 - Does not have a fruit or seed that is likely to create a pedestrian hazard, and is not toxic to humans and does not have spines or thorns.
 - Trees can be purchased and planted at an advanced size so they are less prone to vandalism and provide an immediate visual impact
 - Specie selection should give consideration to the effective shade canopy of the tree (ie density of foliage and crown spread)
 - Tolerates pruning to attain the required clearances whilst maintaining a good structure and form
 - Long lived
 - High tolerance to root damage and disturbance
 - Not susceptible to any pests or diseases commonly found in Adelaide (white fly)
 - Not known to drop branches or suffer from branch shear
 - Does not have a suckering habit

3.4.7 The final selection of trees for individual streets could depend on:

- Availability – not all trees are available at all times and preference should be given to species that are readily available as semi-mature specimens.
- Cultural significance of a particular species for the street.

EXAMPLES OF GENERALLY SUITABLE STREET TREE SPECIES

STREET ROLE	SPECIES
Ceremonial	Platanus orientalis (oriental plane) Angophora costata (smooth barked apple myrtle) Quercus ilex (holm oak) Ulmus procera (English elm)
Terrace	Platanus orientalis (oriental plane) Jacaranda mimosaeifolia Celtis occidentalis (hackberry) Gingko biloba (maiden hair tree) Celtis laevigata (Mississippi sugar berry)

EXAMPLES OF GENERALLY SUITABLE STREET TREE SPECIES

STREET ROLE	SPECIES
Major	Celtis laevigata (Mississippi sugar berry) Sophora japonica (pagoda tree) Gleditsia 'Shademaster' (honey locust) Pyrus ussuriensis (Manchurian pear) Platanus orientalis (oriental plane)
Minor	Lagerstroemia indica (crepe myrtle) Celtis tournefortii (hackberry) Pyrus 'Chanticleer, (flowering pear) Hymenosporum flavum (native frangipanni)
Major Retail	Jacaranda mimosaeifolia' Gleditsia 'Shademaster (honey locust)' Platanus orientalis (orientalis plane0
Squares	Ulmus procera (English elm) Celtis occidentalis (hackberry) Jacaranda mimosaeifolia Platanus orientalis (oriental plane)

3.5 Public Consultation

- 3.5.1** Public consultation on the proposed species of tree for a particular street, tree removals, tree planting, pest and disease management will be undertaken as required by the Corporation's Communication and Consultation Policy for compliance with the community land provisions of the Local Government Act.
- 3.5.2** All proposed changes to established species in streets will be conveyed to all Councillors together with the reasons for the proposed change before proceeding with public consultation.

3.6 Street Tree Register

A register will be maintained of the species selected for each street. The information will be readily available to the public. Initially all existing species will be recorded together with the species currently being established as the preferred species for the street.

3.7 Planting

3.7.1 Each new or replacement street tree will be provided with optimum planting conditions, eg soil and water depending upon the particular location. Specifications related to planting are provided in the Management Plan as an addendum to these guidelines.

3.8 Maintenance

- 3.8.1** Regular audits will be undertaken of all street trees and the information collated and kept current within the asset management system.
- 3.8.2** An annual maintenance program will be developed reflecting the requirements of the street trees.
- 3.8.3** New street trees will be pruned approximately three times in the first ten years, if necessary, to establish their basic structure and the above ground clearance of lower branches.
- 3.8.4** Established trees will be pruned in accordance with Council's maintenance standards.
- 3.8.5** Alternatives to pruning under the Power Line Clearance Code will be sought wherever possible through the use of underground power supply cables or bundled aerial cables.
- 3.8.6** Regularly benchmarking of tree maintenance standards to ensure they reflect Worlds Best Practice will be undertaken.
- 3.8.7** Dead or unsafe trees will be removed as soon as practicable and replaced the next planting season.
- 3.8.8** Poor performing trees will be removed and replaced in the next planting season to reinvigorate streetscapes.

3.8.9 Research into biological pests and diseases that threaten urban trees will continue to be actively supported by Council. The incidence of pests and diseases in the City will be monitored and information provided to researchers. World's Best Practice will be incorporated into the all work practices to assist in controlling the spread of these agents.

3.9 Major Street Upgrades

3.9.1 The opportunity will be taken to review the actual and evolving role of a street and the suitability of the selected species of street trees. This may require a review of the current tree species identified in the Street Tree Register for the street.

3.10 New Development Work

3.10.1 Trees will be protected from development and other activities that threaten their removal or health. The conflicting requirements of trees and infrastructure will be minimised where possible.

3.10.2 Council will always give existing trees priority when considering applications for new developments or for events to be staged. Construction and excavation close to trees can cause damage if correct tree protection zones are not observed. Council will pursue the relocation of infrastructure away from trees, to reduce the need for excessive pruning.

3.10.3 Stringent procedural guidelines will be provided and enforced to protect and preserve trees, for any event or development close to trees.

3.10.4 Investigate means of obtaining compensation for trees lost or damaged due to development.

3.11 Management Plan

3.11.1 A street tree management plan will be developed. This plan is to include existing and currently approved tree varieties designated in the Register for each street, locations planted and procedures relating to replacement planting, tree removal, tree purchase, tree furniture, planting, maintenance and pruning (formative and maintenance).

4 ROLES AND RESPONSIBILITIES

4.1 Policy

The Department of Strategic and Environmental Planning is charged with the coordination of Corporation activity in relation to policy development regarding street tree management for which the Corporation has a responsibility. The Department will also promote Council's new Street Tree Policy.

4.2 Selection of Trees

The Park Lands unit in the Department of Strategic and Environmental Planning is responsible for the selection of trees for all streets

4.3 Installation of Trees

The installation of new trees in a street that is undertaken as part of a general street upgrade is the responsibility of Manager City Projects.

4.4 Maintenance of Trees

Maintaining existing trees in good condition and replacing those that are dying is the responsibility of the Horticulture unit. Before replacing dying trees with a similar tree of the same specie it must be verified with Park Lands Management that the species selected for the street has not been changed.

4.5 Approvals

- 4.5.1 Development Applications – the Department of City Development is responsible for ensuring that all applications make adequate provision for the protection of existing trees and encourage the planting of new specimens.

4.6 Service Standards

The Asset Manager Roads will determine an acceptable level of safety with relation to street trees along any street within the City.

The Asset Manager Park Lands will determine an acceptable level of maintenance for street trees as defined in the Corporation's Horticultural Standards for these assets.

5 PROCESS AND REVIEW

The Council's Street Tree Policy is supported by the Implementation Guidelines (Management Plan) which are issued a separate document.

The Policy and Guidelines will be reviewed on an annual basis by the Department of Strategic and Environmental Planning.

6 MONITORING AND PERFORMANCE

6.1 General

For the purposes of monitoring the implementation of these Guidelines the following performance measures will be used. The responsible Departments must keep adequate records to be able to supply the necessary performance measures.

6.2 Maintenance

- The number of street trees that need to be replaced annually because of their poor condition.

6.3 New Plantings

- The percentage of new street trees that successfully survive the first twelve months.

6.4 Asset Management

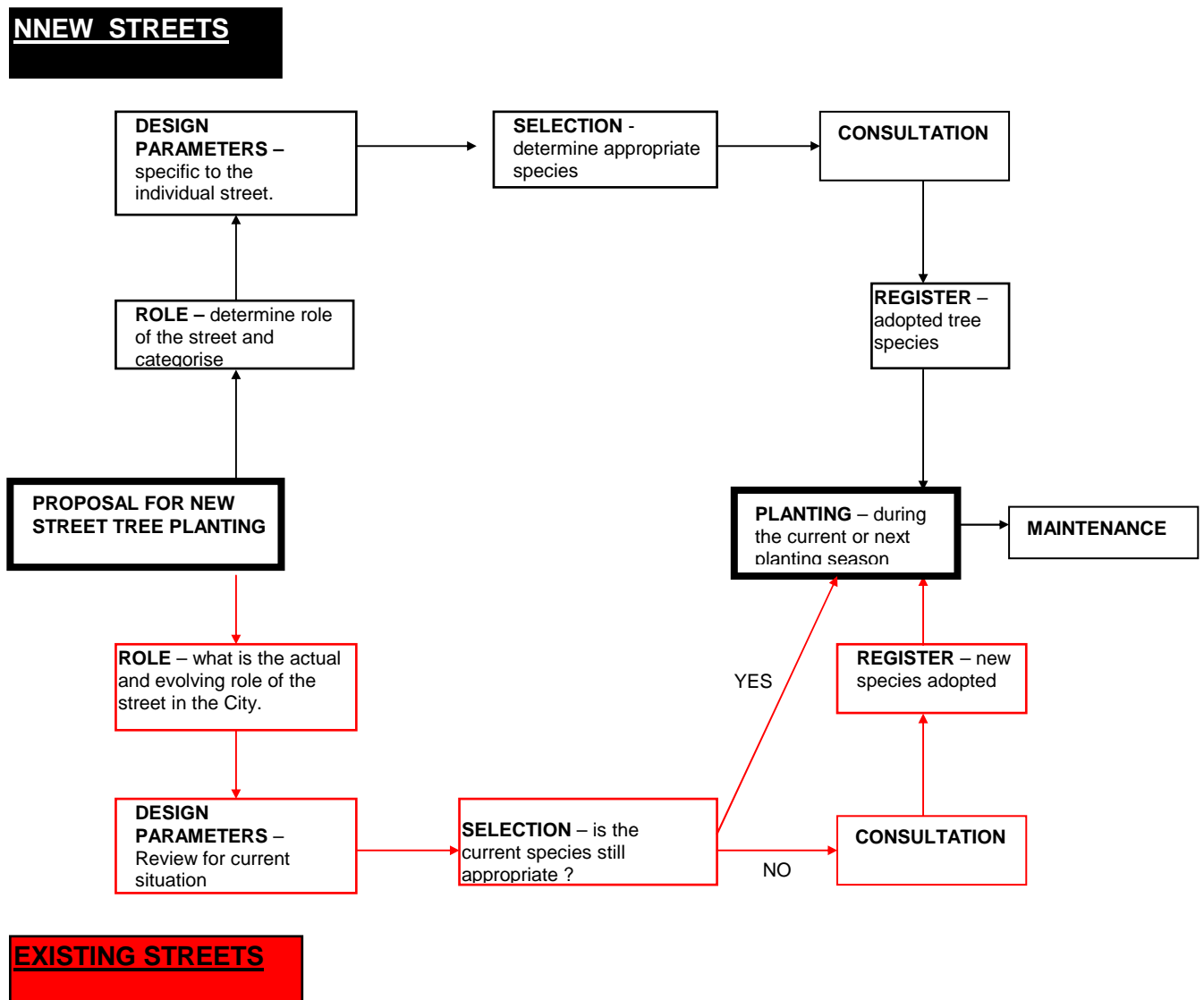
- The maintenance of a current Street Tree Register with all selections endorsed by council.
- The number of new streets added to the Register annually and plantings completed.

APPENDIX 1

Street Tree Management Process - Procedures

Implementation of the Policy uses the preceding Guidelines as the basis for managing street trees within the City.

The process to be followed is shown in the following diagram.



APPENDIX 2**STREET TREE POLICY - IMPLEMENTATION PROGRAM****TIMETABLE**

	Action	June – Aug.	Sept. – Nov.	Dec.- Feb. 2002	July
	Raising internal awareness of Policy				
	Development of a Corporate database for recording the Street Tree Register.				
	Training of relevant officers				
	Promotion through the Messenger of the Register “Know your tree”				

APPENDIX 3**STREET TREE POLICY - TRAINING PROGRAM**

DATES	ACTION	RESPONSIBILITY
July Weeks 1&2	Relevant Departmental and Section meetings to be given an overview of the new policy and how it will effect the staff in that unit.	Manager Strategic & Environmental Planning
July Weeks 3&4	Focused training of specific officers regarding details of implementing the Policy.	Asset Manager Park Lands
July - August	Any changes to processes will be finalised to make sure they implement the policy.	Asset Manager Park Lands
End November	Specific training for relevant officers regarding use of the Street Tree Register	Asset Manager Park Lands

APPENDIX 4**STREET TREE POLICY - COMMUNICATION PLAN**

DATES	ACTION	RESPONSIBILITY
MAY 15 Tuesday	Media Release regarding Council's adoption of Policy and what it will mean.	Corporate Communications
MAY Weeks 3&4	Use City Life page in the Messenger to promote Council's Policy and availability of Street Tree Register. "Know your tree"	Asset Manager Park Lands
ONGOING	ACTION	
New Street Tree Selections	Consultation with all property owners in the street.	Asset Manager Park Lands